

Slacan Substation Projects



Slacan's first substation project 138 KV lattice structures at Cavalier & Balzac, Alberta in 2001.

SLACAN
Industries Inc.

slacan.com

Dominican Republic

This project for export to the Dominican Republic involved manufacturing and shipping 3 separate 12.5 KV substations.

All columns and girders were to be completely assembled to minimize field labour and were to fit into open top shipping containers

The first photo shows column and girder sections assembled, waiting to be loaded into shipping containers

First photo right shows a completely loaded shipping container.





Two of the Dominican Republic 12.5 KV lattice structures after field installation were completed.

Windfarm – Riply Ontario

Majestic 230 KV substation feeds power from Riply Ontario windfarm to the grid.

Slacan designed and manufactured both stations including the 230 KV A-Frame deadend structures shown above.

A closer view of the same installation shows the 230 KV disconnect switch structure.





Riply windfarm 34.5 KV 6-bay structure collecting power from 39 turbines to feed the 69 KV transformer.



69 KV disconnect switch, metering stands and A-Frame deadend structure.



Above the Majestic 230 KV A-Frame deadend structures are ready for power-up.

At right, reactors stands at the Riply site are designed to eliminate circular eddy current paths.

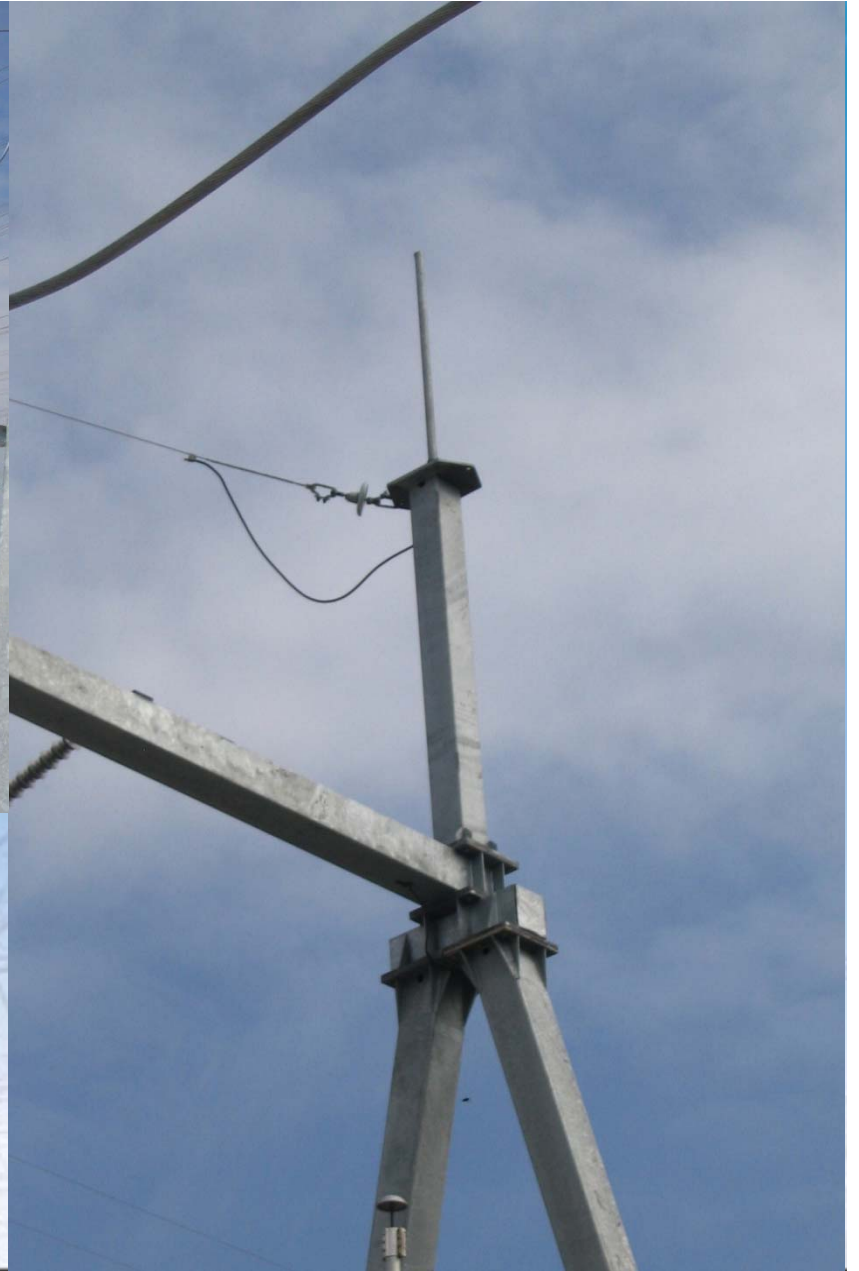




Above is a 230 KV switch stand at Majestic substation.

At right, the skywire extension and lightning mast are shown.

The customer remarked that “ this was one of the best fitting stations he had assembled”.



H-Frame— St. Clair Energy



Above, a column is test assembled at our plant to ensure trouble free field erection.

At right, one of four H-Frame deadends nears completion at the St. Clair Energy Center 230 KV substation





Partial view of the switchyard at St. Clair site showing 230 KV disconnect switches, circuit breakers and A-frame deadend structures in the background.



Collector structures designed and manufactured by Slacan for the Prince Windfarm Phase 2 project.

SLACAN
Industries Inc.

slacan.com

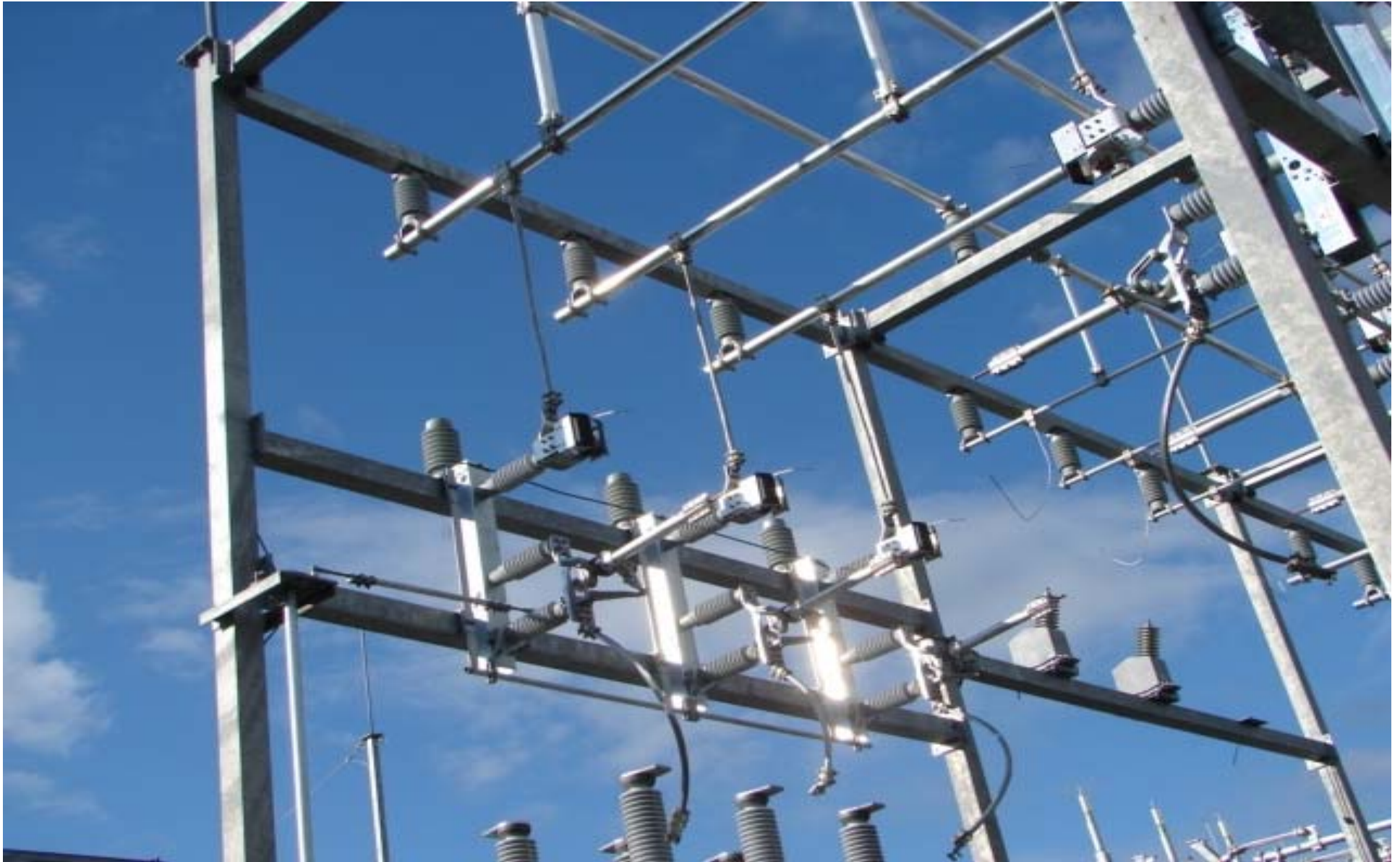
Prince Windfarm

Two views of the termination structures at the Prince Windfarm Phase 2 project.

Above, 2 of 4 terminations are visible completed, with the collector 8-bay structure in the background.

At right, a close-up view of one termination stand.





A view of a switch, drive and bus runs on Prince Windfarm collector 8-bay structure.



Erecting the beam of the 230 KV A-Frame deadend at Prince Windfarm Phase 2.



Galvanized HSS columns, beams and equipment stands ready for shipment to the jobsite. Note mark numbers painted on the end plates so they are covered after installation.



230 KV deadend structure using I beam columns for high loading condition.



Columns showing beam connections stubs and grounding tabs.



Anchor cages with partial galvanizing are assembled and ready for shipment.



Suspension arms banded and colour coded for shipment to the Victor Mine 115 KV Transmission Line



230 KV transmission line steel cross arms and cross braces for angle and tangent structures leading to Prince Windfarm.

USER LIST SUBSTATION/STRUCTURAL PROJECTS

<u>VOLTAGE</u>	<u>CUSTOMER</u>	<u>PROJECT</u>
138KV	Delta Hudson	Pan Canadian Ab., Cavilier/Balzac Sub & Switchyard
25KV	Cribtec	SM-1 Sub.
69KV	Abitibi Consolidated	ACBC-002 Sub.
25KV	PTS Electric	Co-op Regionale D' Electricity Sub.
15KV	Powertel	Great Lakes Power Sub.
12.5KV	PTS Electric	Dominican Republic 3 stations, JJ Puello, Las Barias, Nizao Najayo
44KV	PTS Electric	Goldcorp Red Lake Sub.
144KV	Can. Gas & Electric	Grand Prairie Ecocentre Sub.
115KV	Powertel	Great Lakes Power Andrews TS.
44KV	Columbia Forest	Structure Mods.
69KV	Comstock	Inco #4 Oxygen Plant Sub.
69KV	Comstock	Inco #2 Steel Crossarms
115KV	Powertel	Great Lakes Power Andrews TS #2 Sub.
	Eptcon	Norfolk Power Delhi MS-1 Stands
115KV	Powertel	Debeers Victor Mine Sub.
	Eptcon	Great Lakes Power Steeltown, Patrick St. Stands
115KV	Powertel	Steel Crossarms
	Powertel	CVT/PT Stands Inco and Debeers mines
230KV	Powertel	Great Lakes Power Steel Crossarms
115KV	Powertel	Five Nations Energy Steel Crossarms
115KV	Valard Const.	Suspension Arms Victor Mine TL
230KV	S&C Electric	Prince Windfarm Phase 2 Sub.
	Black & McDonald	Waterloo North Structure Mods.
	Black & McDonald	Greenfield Energy Anchorage Assy for Towers
69KV	Powertel	Inco #4 Girders & Structure MODs.
	Powertel	Fort Albany Stands
230KV	K-Line Const.	Majestic North TS. Sub.

USER LIST SUBSTATION/STRUCTURAL PROJECTS

<u>VOLTAGE</u>	<u>CUSTOMER</u>	<u>PROJECT</u>
----------------	-----------------	----------------

69KV	K-Line Const.	Riply Windfarm Collector Sub.
115KV	Powertel	Umbata Falls Switch structure
230KV	Black & McDonald	St. Clair Energy Centre Sub.
230KV	HDS/Delta Unibus	Westar Energy Centre, KS Tapoff Structures
34.5KV	HDS/Heartland.	Weber Sub., KS
5KV	HDS/Niles OH	Walnut St. Regulator Structure
69KV	HDS/Fulton, Mo	Fulton Junction 1 bay switch structure
15KV	Prairie West Tech.	Service Kidd Creek Mine Stands
230KV	Mitsubishi	Hydro One Clairville Equipment Stands
44KV	Powertel	Xstrata Fraser Morgan Mine Deadend structures
115KV	Powertel	Gartshore GS Lattice deadend, stands, cable tray
230KV	Kiewit	Thorold Co-gen complete packaged substation